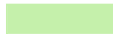

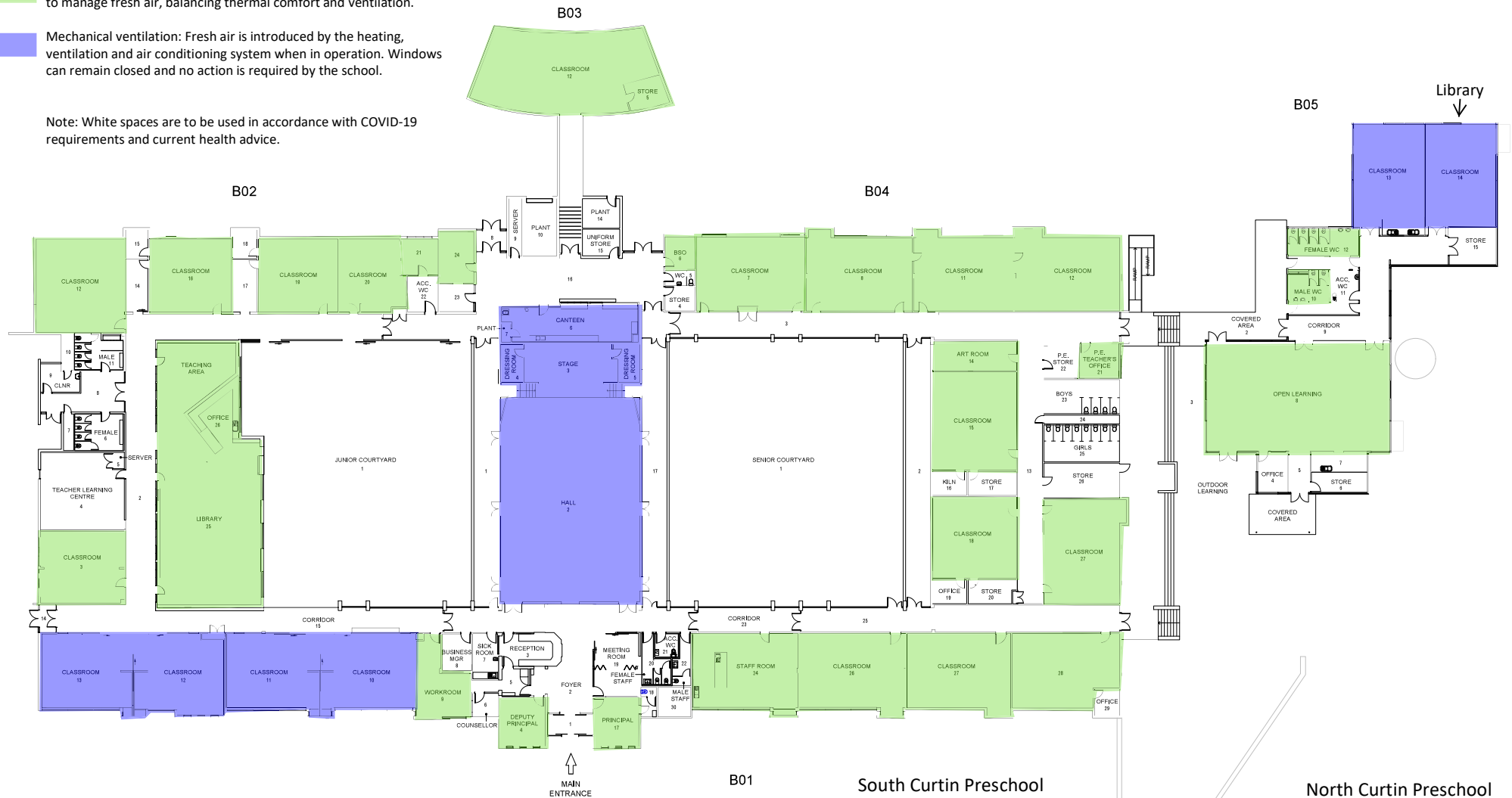


# IAQ Map Legend - Winter Operation

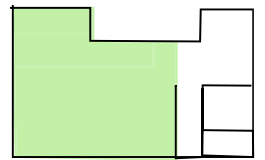
 Natural ventilation: Operable windows and/or louvres should be used to manage fresh air, balancing thermal comfort and ventilation.

 Mechanical ventilation: Fresh air is introduced by the heating, ventilation and air conditioning system when in operation. Windows can remain closed and no action is required by the school.

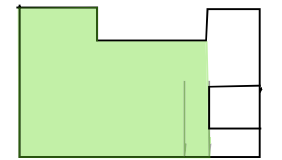
Note: White spaces are to be used in accordance with COVID-19 requirements and current health advice.



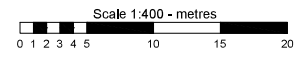
South Curtin Preschool



North Curtin Preschool



ISSUE	AMENDMENT	DRAWN	VER'D	APP'D	DATE



SCALE 1:400  
DATE OCT 2016  
DRAWING SHEET SIZE = A3

ACT Government  
Education and Training

PROJECT  
CURTIN PRIMARY SCHOOL  
INFRASTRUCTURE & CAPITAL WORKS  
SCHOOL LAYOUT PLAN