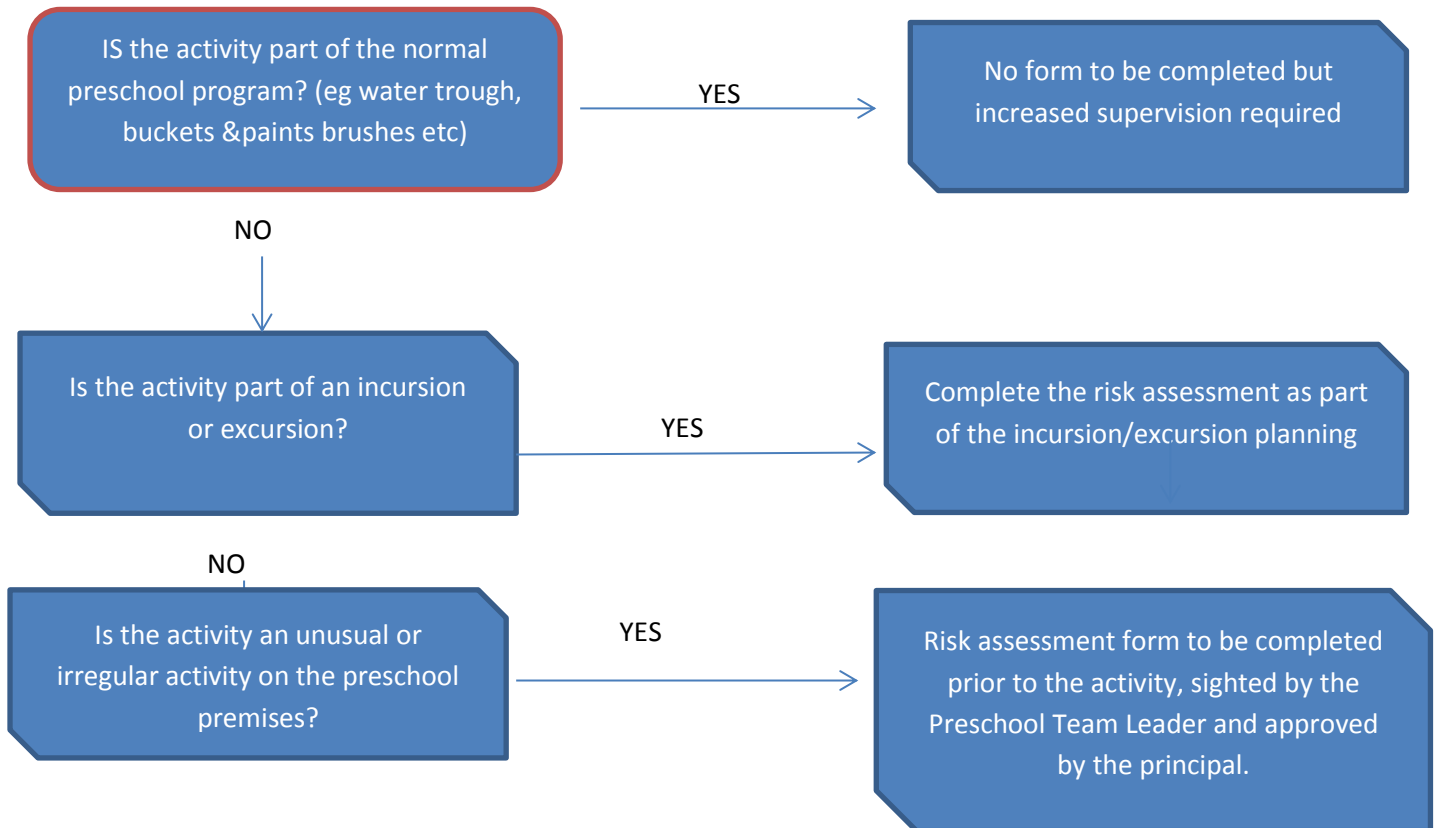


Water Safety Procedure

Activities excursions and incursions involving water carry an increased risk, which needs to be considered beforehand. Some water activities will require a specific risk assessment form to be completed, however all water activities should incorporate the following supervision and safety guidelines.

Flowchart for determining whether a risk assessment form is required



General Guidelines for supervision and safety

- Ensure water container is not filled to a dangerous depth
- Ensure there is no equipment surrounding the water trough or other receptacle that a child could use to climb into the water trough
- Ensure that the water activity is within direct eyesight of a staff member at all times